

# SECOND

## THE SECOND SECCON

SWINDON 25<sup>TH</sup>-27<sup>TH</sup> MAY 2001

GoH: PAUL J. McAULEY

### PROGRESS REPORT ONE NOVEMBER 2000

*Are you running another SECCON then?*

We certainly are! Partly because the first one went so well, partly because there are new things we want to try, but mainly because of all of you out there who asked us when we were going to run another one, please?

*So what will SECOND be like?*

Oh, a not-too-intense programme featuring a mix of items from serious discussion to deranged fun, set against a friendly, relaxed and sociable atmosphere. A Small, Enjoyable and Cosy Convention - just like the original SECCON!

*Same place as before?*

No; we've moved and so has our venue. **SECOND** will be held at the De Vere Hotel in Swindon - see inside for details.

*Sounds like fun! Can I join?*

If you've received this PR, then either (a) you already have, or (b) we remember you from **SECCON** and thought you'd like the idea of another one. See the back page for contact details, or if we've given this to you at Novacon, join up now!

## OUR GUEST OF HONOUR

We are very pleased to welcome **Paul McAuley** as our Guest of Honour. Paul is a prolific and well respected author in the British new wave, whose work ranges from the nanotech of *Fairyland* to the alternate history of *Pasquale's Angel*, via fantastic tales and space opera and most everything in between. A biologist by training and a former lecturer in botany at St Andrews University, he is now a full-time writer. Paul has won the Dick, Clarke and Campbell awards, and his most recent novel, *Shrine of Stars, The Third Book of Confluence*, is in the shops now. For more information on Paul, have a look at his website at:

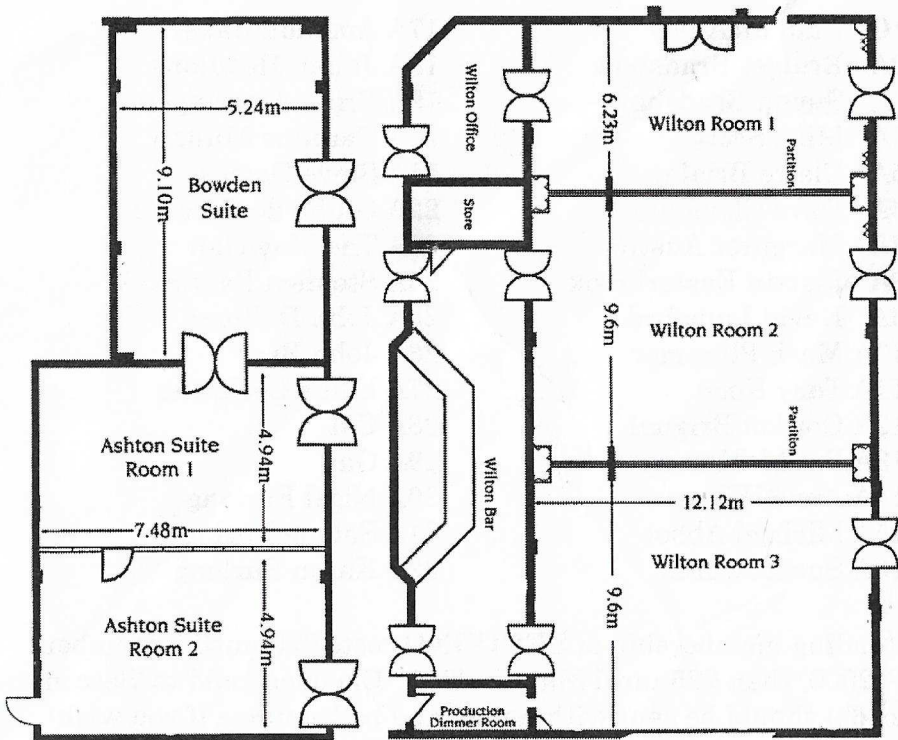
<http://www.omegacom.demon.co.uk/>

## OUR HOTEL

**SECCOND** will be held at the De Vere Hotel, Swindon. The De Vere is a modern hotel that provides us with an excellent range of facilities. Although room rates will be higher than at Seccon (£36 per person per night double or twin, £46 single) we are confident that this increase is more than reflected in the quality of accommodation and function space. However, we're also investigating lower-cost alternative accommodation around Swindon.

The De Vere has an restaurant and is located on a leisure park with diners, pubs and a multiplex cinema. For those who want to range further afield, although the De Vere is located well outside central Swindon, there are some highly-regarded restaurants only a short cab ride away. Because of this, we intend to leave the Saturday night fairly programme-free, so that (in our relaxed spirit) you can enjoy a meal out without having to rush back for programme items. Of course, if you *don't* plan to disappear off to eat, there will still be things going on in the Con area.

### Car Park (Level Access)



As for facilities, we've arranged sole use of the function space in the lower ground floor of the De Vere. As can be seen from the plan above, this gives us a good-sized but closely-grouped function space. We're still finalising our plans for how best to use it, but our current ideas centre on using Wilton 1 and 2 combined as programme space, with Wilton 3 as one fan lounge and probably Ashton 1 and 2 combined as another. All have ready access to the Wilton Bar, which will, as with the rest of this floor, be for the exclusive use of **SECOND** members. Having two fan lounges will also allow us to have smoking and non-smoking areas. Finally, the Bowden Suite will likely be used for the Dealers' Room; potential dealers will doubtless be pleased to see that it is just a few metres' level access to the car park.

## **SECOND** Members as of 10 November 2000

1G Paul McAuley	17A Amanda Baker
2A Bridget Bradshaw	18A Julian Headlong
3A Simon Bradshaw	19A Brian Ameringen
4A Mike Scott	20A Caroline Mullan
5A Claire Brialey	21A Steve Davies
6A Dave Clements	22A Giulia de Ceseare
7A Margaret Austin	23A The Magician
8A Martin Easterbrook	24A Stephen Baxter
9A David Langford	25A John Dallman
10A Mark Plummer	26A John Bray
11A Tony Keen	27A Eddie Cochrane
12A Gordon Brignal	28A Cal
13A Pat McMurray	29A Gav
14A Anne Wilson	30A Nigel Furlong
15A Michael Abbot	31A Sabine Furlong
16A Sue Edwards	32B Karen Furlong

Attending membership of **SECOND** costs £20 until November 12<sup>th</sup> 2000, then £25 until May 1<sup>st</sup> 2001. Cheques, paid to 'Seccon' (no 'd') should be sent with name (and badge name if you wish) and contact details to:

**SECOND**  
C/O 19 HILL COURT ROAD  
CHELTENHAM  
GLOS GL52 3JJ

The **SECOND** committee are Simon and Bridget Bradshaw. For further details, contact us at the above address or via our email or Web site as below:

### **Email**

[second@seccon.org.uk](mailto:second@seccon.org.uk)

### **Web**

<http://www.seccon.org.uk/>